



RAWBEAM 350

PHOTOMETRY



AYRTON

Digital Lighting



Total Flux	18,000 lm (fan mode Stage, mid zoom)
-------------------	--------------------------------------

CCT @LED engin	7300 (±600K)
-----------------------	--------------

CCT @open	6800 (±600K)
------------------	--------------

Ra @open	66 (±2)
-----------------	---------

TLCI	38
-------------	----

TM-30	Rf: 64 Rg: 85
--------------	---------------

Fan Mode	Noise Level (dBA)	by Goniometer (lm)	by Sphere (lm)
Auto	44.5	16,500	18,000
Stage	48.9	16,600	18,500
Silence	39.2	12,200	13,200
Super Silence	34.2	10,350	11,300

Note: noise measured @1m distance, static status, ambient 31 dBA.

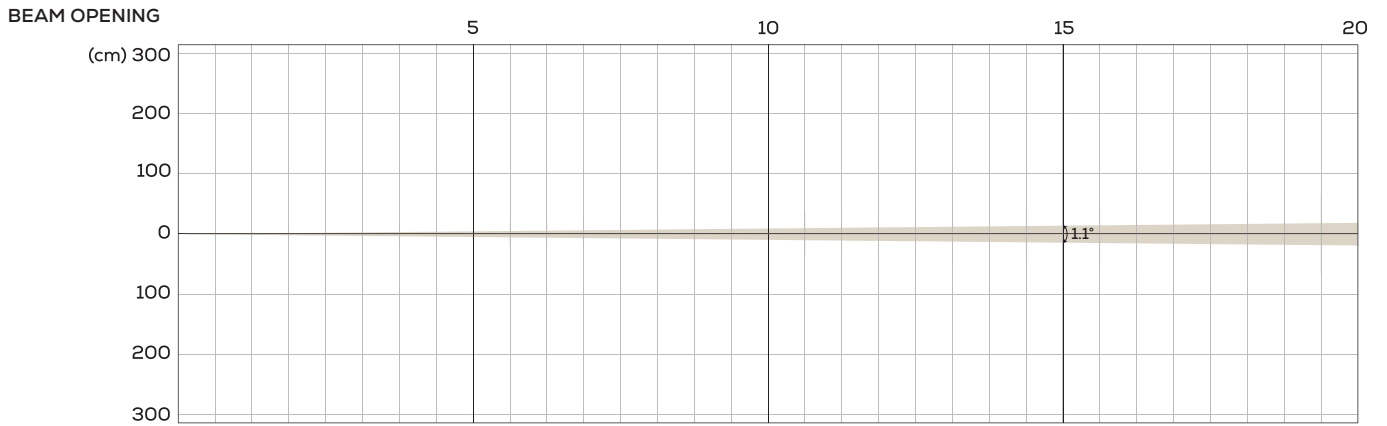
Voltage / Power	100-240 V, 50-60 Hz	660 W
------------------------	---------------------	-------

Fixture Dimension / Weight	339 x 592 x 297 mm	25.4 kg
-----------------------------------	--------------------	---------

Packing Dimension / Weight	405 x 705 x 340 mm	36.4 kg
-----------------------------------	--------------------	---------

AUTO MODE | NATIVE CRI GREATER THAN 70

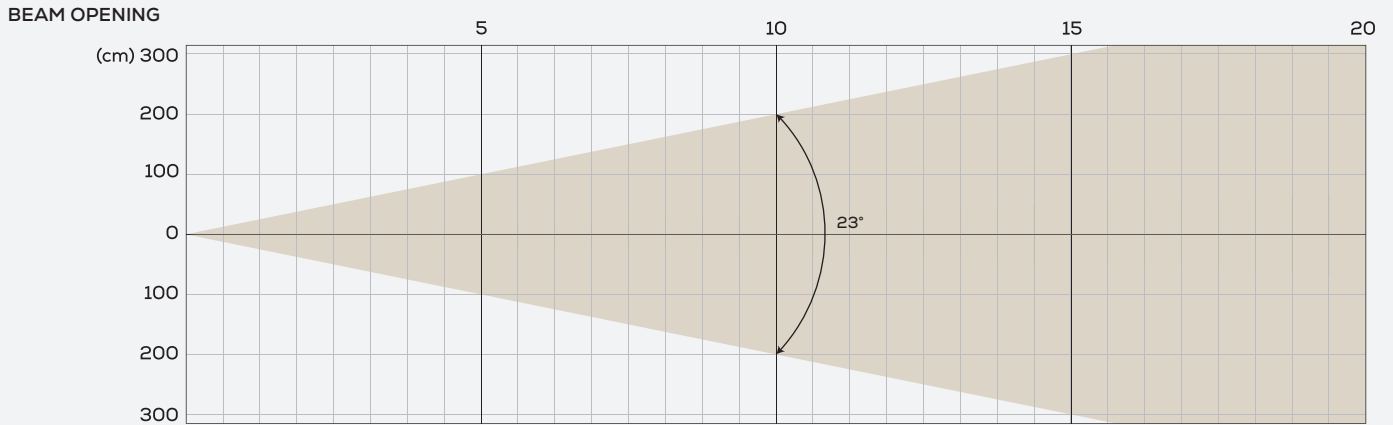
MIN ZOOM



INTENSITY

Distance (m)	5		10		15		20		30		50		100	
unit	Lux	Diameter	Lux	Diameter	Lux	Diameter	Lux	Diameter	Lux	Diameter	Lux	Diameter	Lux	Diameter
White	5,360,000	0.1	1,340,000	0.19	595,536	0.29	335,000	0.38	148,889	0.58	53,600	0.96	13,400	1.92

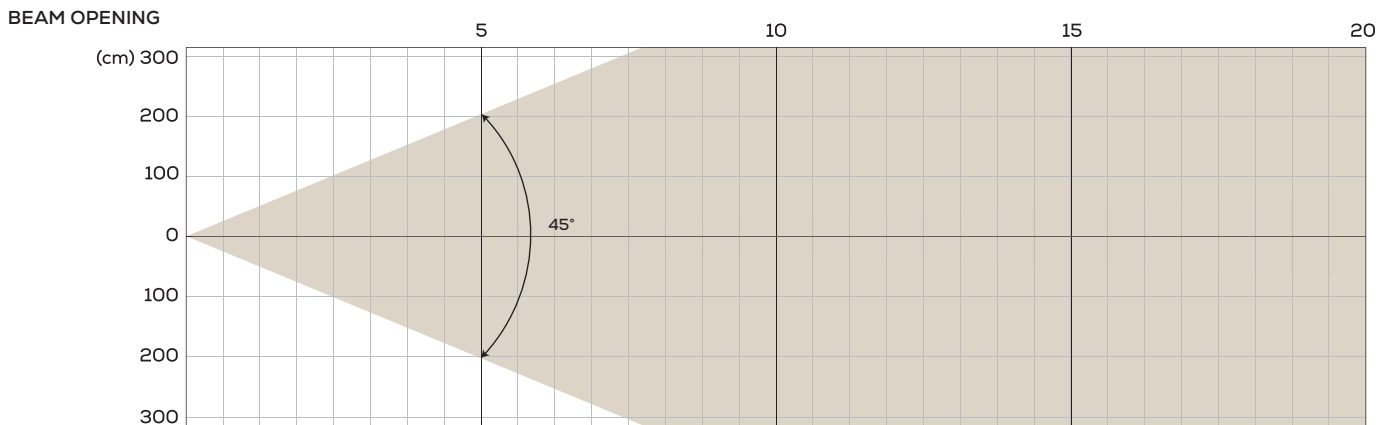
MIDDLE ZOOM



INTENSITY

Distance (m)	5		10		15		20	
unit	Lux	Diameter	Lux	Diameter	Lux	Diameter	Lux	Diameter
White	107,600	2.03	26,900	4.07	11,956	6.1	6,725	8.14

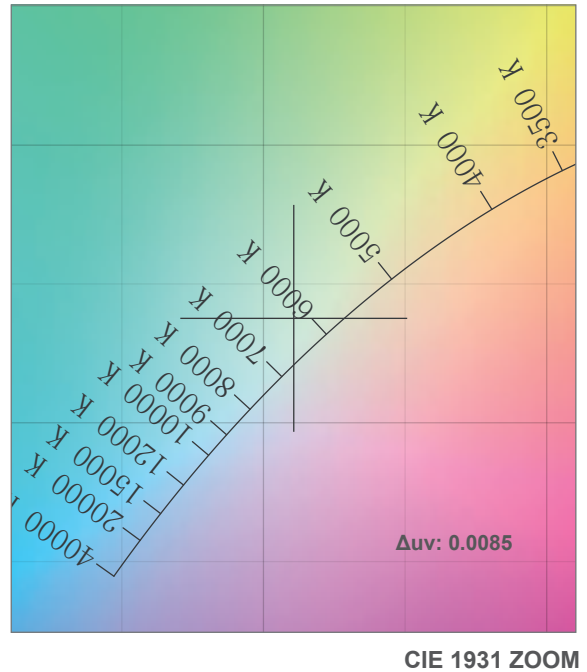
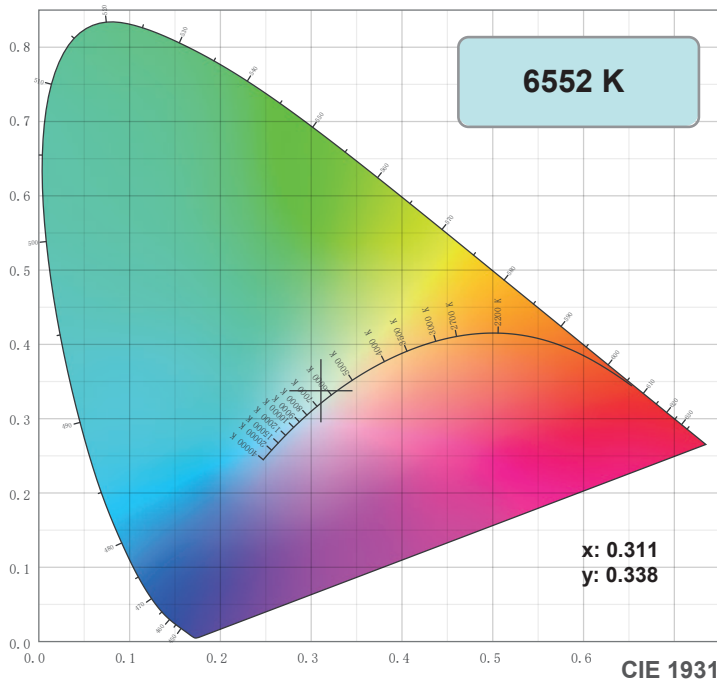
MAX ZOOM



INTENSITY

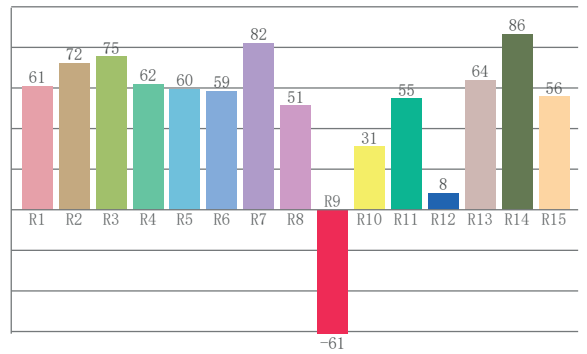
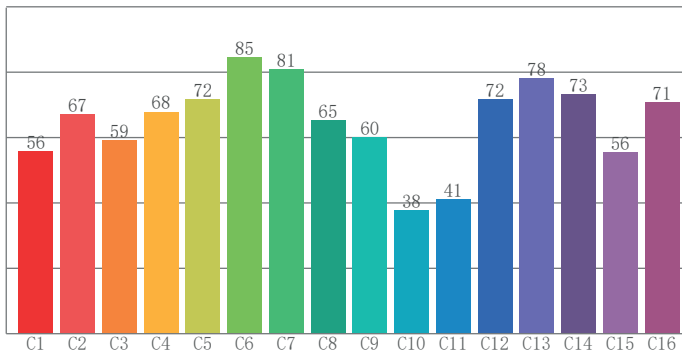
Distance (m)	5		10		15		20	
unit	Lux	Diameter	Lux	Diameter	Lux	Diameter	Lux	Diameter
White	25,964	4.14	6,491	8.28	2,885	12.43	1,623	16.57

COLOUR DETAILS



TM-30: 64.4

CRI: 65.2 (R1-R8)



CRI R values, only R1-R8 are used to calculate final CRI value

R1	R2	R3	R4	R5	R6	R7	R8	R9	R10	R11	R12	R13	R14	R15
60.8	72.4	75.5	61.8	59.6	58.6	82.1	51.3	-61.1	31.1	54.8	8.3	63.9	86.5	55.7

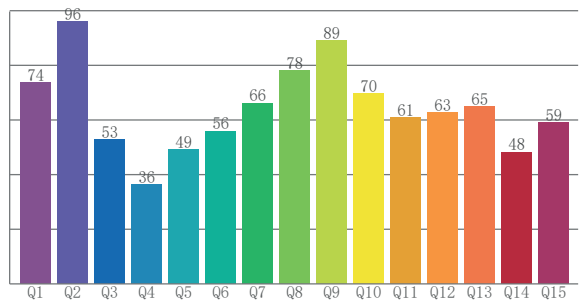
TM30 C values, 16 binned values out of total of 99 C values

C1	C2	C3	C4	C5	C6	C7	C8	C9	C10	C11	C12	C13	C14	C15	C16
55.8	67.0	59.1	67.9	71.9	84.7	81.0	65.4	60.2	37.6	41.1	71.8	78.0	73.1	55.6	70.8

CQS Q values

Q1	Q2	Q3	Q4	Q5	Q6	Q7	Q8	Q9	Q10	Q11	Q12	Q13	Q14	Q15
73.8	96.2	53.0	36.5	49.1	56.0	66.2	78.2	89.0	69.6	61.0	62.7	65.0	48.3	59.1

CQS: 61.1



Color parameters

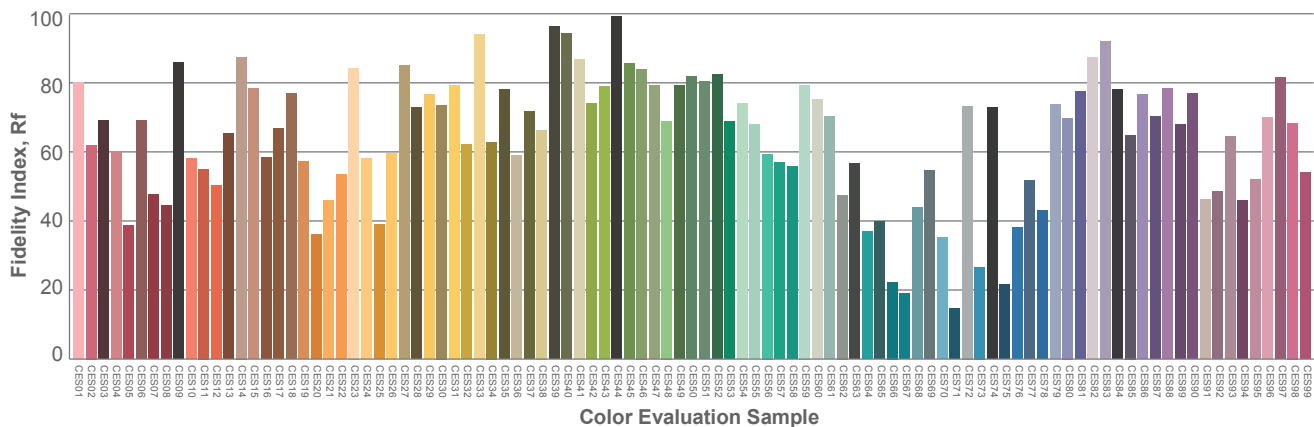
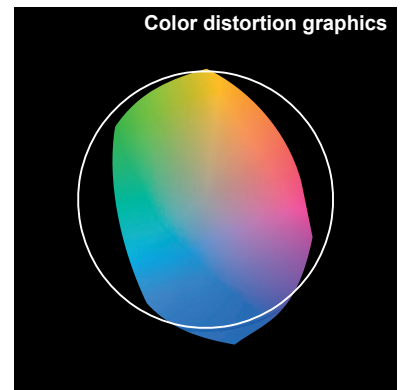
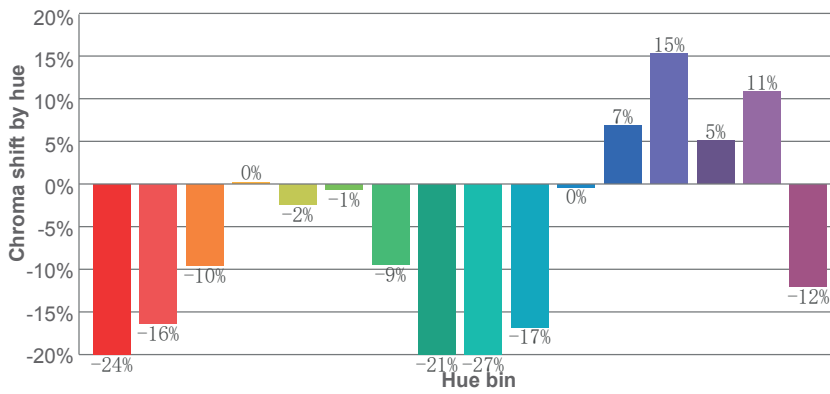
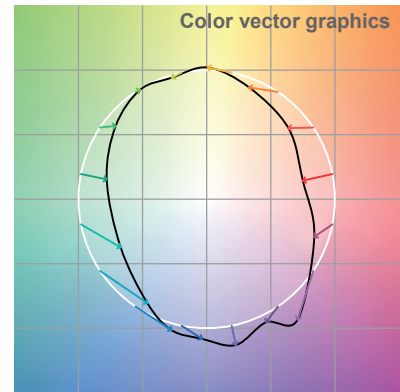
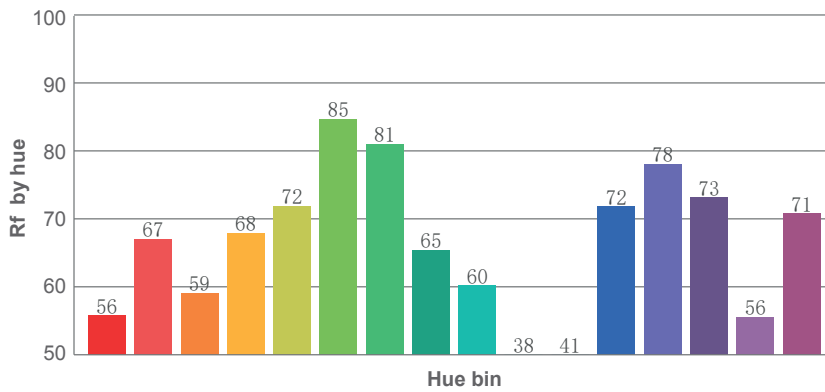
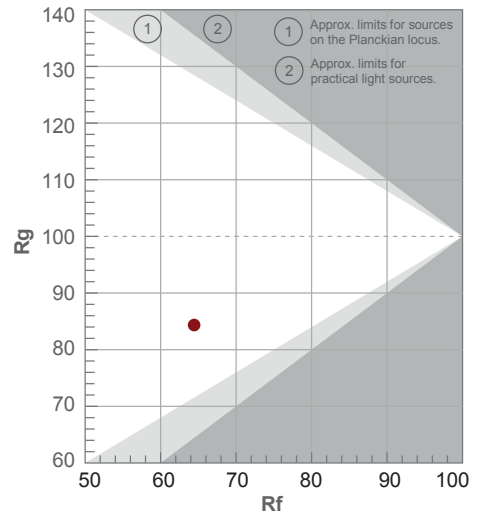
Color temperature	Color rendering index	Red component	Color fidelity	Color gamut	Color quality scale	Color coordinate cie 1931	Color coordinate cie 1931	Color coordinate	Color coordinate	Color deviation from black body
CCT	CRI	CRI R9	TM30 Rf	TM30 Rg	CQS	x	y	u	v	Δuv
6552 K	65.2	-61.1	64.4	84.3	61.1	0.311	0.338	0.193	0.315	0.0085

TM30

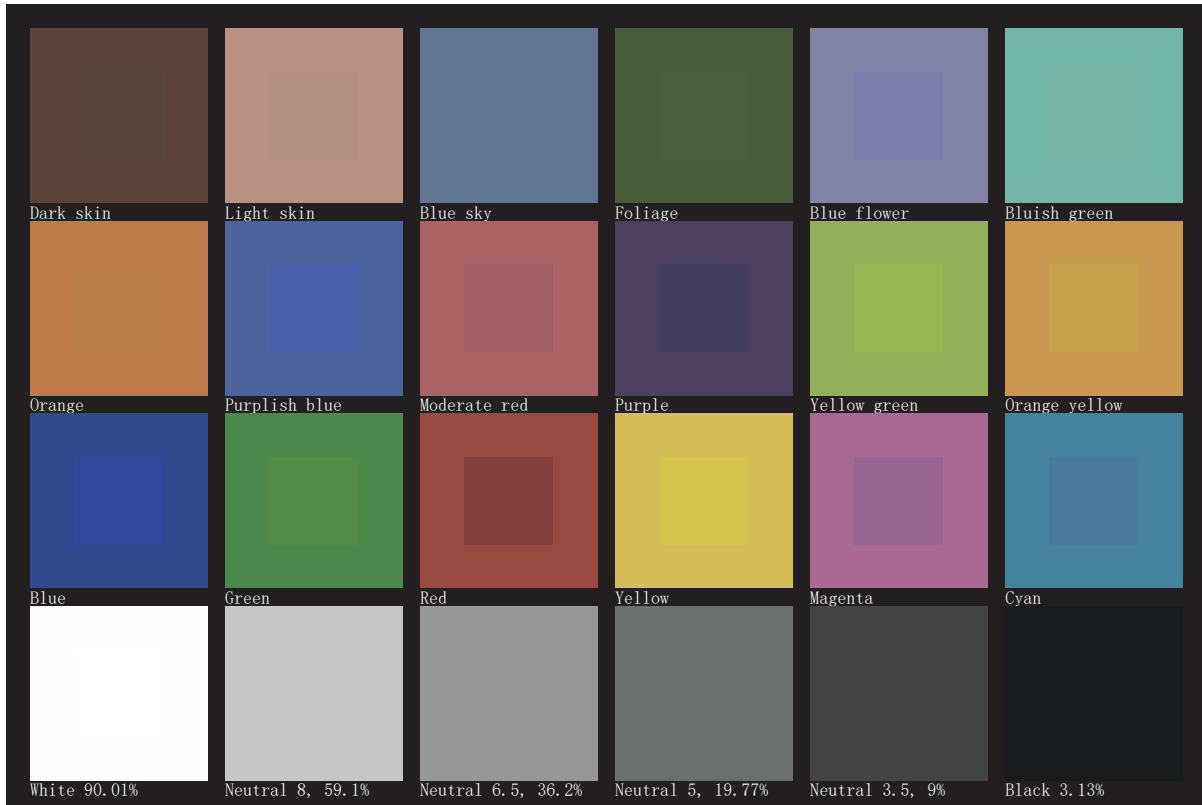
Rf 64.4
Fidelity index Rf

Rg 84.3
Gamut index Rg

Hue Bin	R _f	Shifts (%)	
		Chroma	Hue
1	56	-24%	-1%
2	67	-16%	10%
3	59	-10%	21%
4	68	0%	19%
5	72	-2%	8%
6	85	-1%	-4%
7	81	-9%	-8%
8	65	-21%	0%
9	60	-27%	24%
10	38	-17%	41%
11	41	0%	34%
12	72	7%	17%
13	78	15%	0%
14	73	5%	-15%
15	56	11%	-38%
16	71	-12%	-12%



TLCI 38





AYRTON

Digital Lighting